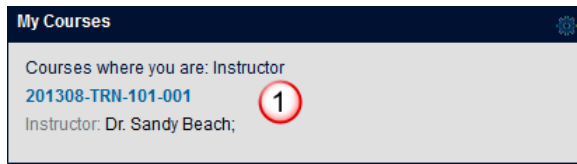


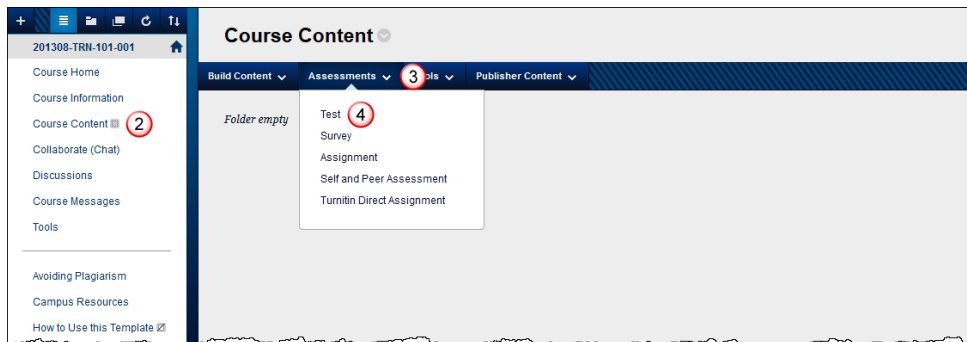
1. Enter a **Course**.



2. Select a **Content Page** to deploy the tests. In this example Course Content is used.

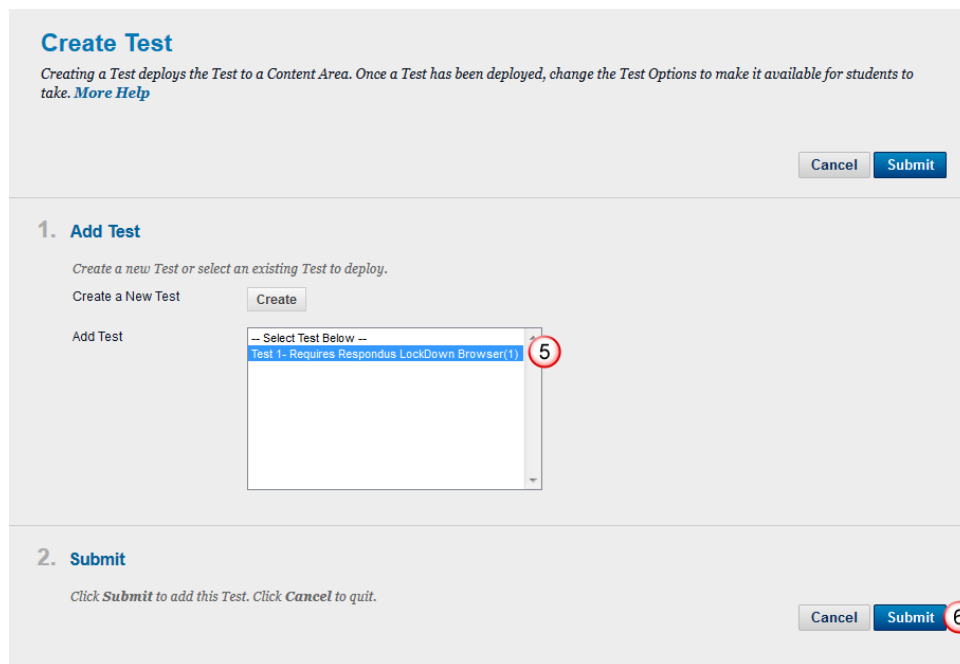
3. Select **Assessments**.

4. Select **Tests**.



5. Select the **Test Name** to be deployed. In this example Test 1 is used. Tests can only be deployed on one content page.

6. Select **Submit**.



7. Choose the **Test Options** for the test.
8. Select **Submit**.

Test Options

Test Options control information about the Test, including instructions, availability, feedback, and presentation.
[More Help](#)

* Indicates a required field.

Cancel **Submit** 8

If you have any questions or concerns about this document, please contact the ITS Service Desk by calling (304) 293-4444 or by sending an email to ITShelp@mail.wvu.edu.